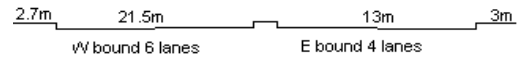
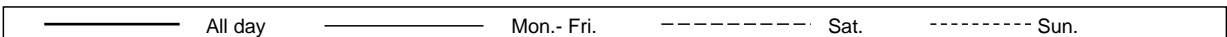
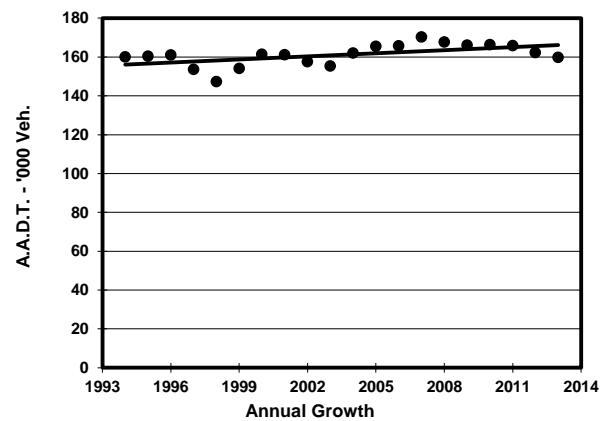
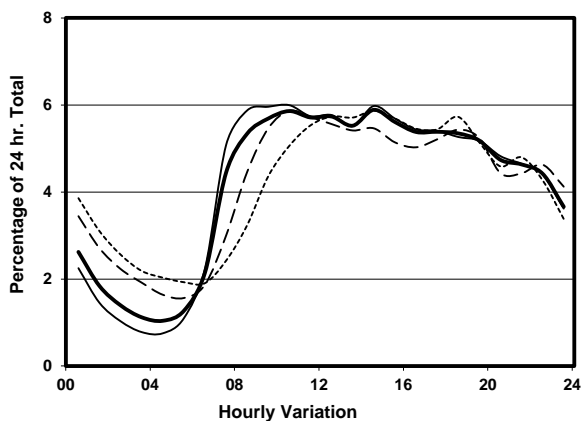
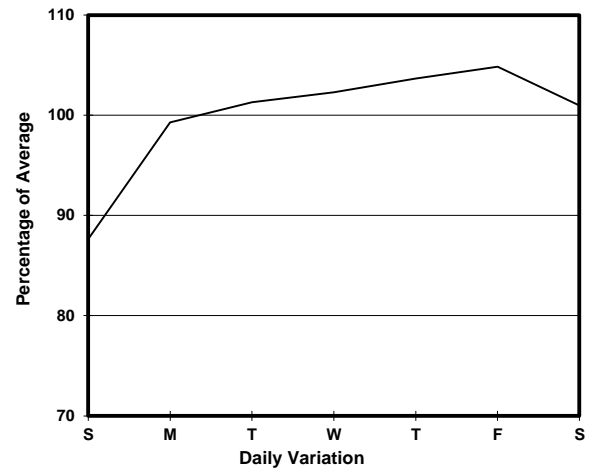
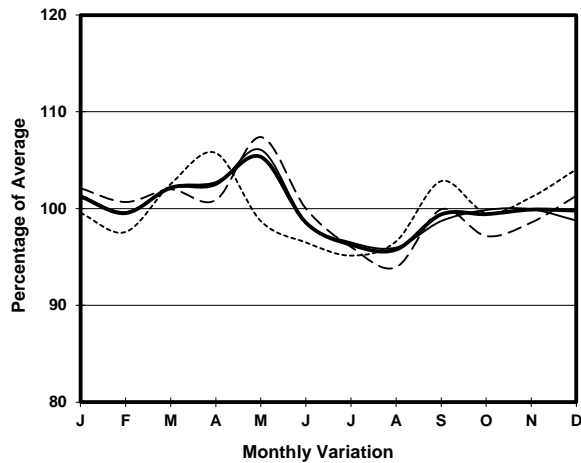


YEAR	2013	LINK	HARCOURT RD (from TAMAR ST to ARSENAL ST)
CORE STATION	1001		
ROAD NETWORK	MAJOR		
ROAD TYPE	URBAN TRUNK ROAD		



1. TRAFFIC FLOW VARIATION AND GROWTH



2. TRAFFIC CHARACTERISTICS (BY DIRECTION)

Parameter	All - Day	Mon. - Fri.	Sat.	Sun.
EAST BOUND				
A.A.D.T.	60560	61290	63050	57290
R 12 / 24 - %	63.2	65	58.9	57.8
R 16 / 24 - %	82.8	85.1	77.5	76.6
AM Peak Hour	0900-1000	0800-0900	0900-1000	0900-1000
One-way flow at AM peak hour	3310	3530	3400	2330
T - % (AM)	-	10.2	-	-
PM Peak Hour	1600-1700	1600-1700	1800-1900	1800-1900
One-way flow at PM peak hour	3020	3060	3140	3190
T - % (PM)	-	6.9	-	-
Prop.of commercial vehicles - 16 hr.	-	6.8	-	-
WEST BOUND				
A.A.D.T.	99240	103200	99240	84020
R 12 / 24 - %	67.6	69.3	63.6	61.9
R 16 / 24 - %	86.2	87.8	82.4	80.7
AM Peak Hour	0900-1000	0900-1000	0900-1000	0900-1000
One-way flow at AM peak hour	5780	6280	5470	3840
T - % (AM)	-	9.5	-	-
PM Peak Hour	1700-1800	1700-1800	1800-1900	1800-1900
One-way flow at PM peak hour	5690	5990	5670	4910
T - % (PM)	-	7.2	-	-
Prop.of commercial vehicles - 16 hr.	-	7.2	-	-

3. OTHER INFORMATION AND COMMENT

4. Vehicle classification and occupancy - Monday to Friday

Time		Class of vehicle									
		Motor Cycle	Private Car	Taxi	Private LB	PLB	Goods veh.		Non Fr. Bus	Fr. Bus	
							Light	M & H		SD	DD
0700-0800	Pro	2.5	25.8	46.2	2.4	1.7	8.5	3.3	5.7	0.1	3.8
	Ocp	1.1	1.4	2.0	7.6	10.4	1.4	1.4	15.1	6.3	32.5
0800-0900	Pro	2.1	43.8	33.9	0.9	0.9	8.8	1.7	3.9	0.1	4.0
	Ocp	1.1	1.4	2.1	4.1	10.9	1.7	1.3	17.3	26.2	43.5
0900-1000	Pro	2.5	36.3	35.7	0.5	0.8	14.2	3.6	2.1	0.1	4.2
	Ocp	1.0	1.4	2.0	2.4	9.2	1.6	1.3	9.2	5.9	21.2
1000-1100 Peak hour	Pro	1.8	35.9	35.1	0.5	0.8	18.2	3.5	1.3	0.1	2.9
	Ocp	1.1	1.5	2.1	2.3	3.8	1.6	1.3	6.6	5.8	16.4
1100-1200	Pro	1.9	36.0	33.4	0.8	0.4	21.0	3.0	1.2	0.1	2.3
	Ocp	1.0	1.7	2.3	4.4	3.7	1.6	1.4	9.9	1.0	20.1
1200-1300	Pro	1.7	37.1	37.2	0.9	0.4	16.6	2.9	1.6	0.1	1.7
	Ocp	1.0	1.5	2.3	4.9	6.0	1.6	1.4	11.5	2.3	17.7
1300-1400	Pro	1.9	38.1	35.8	1.1	0.2	17.3	2.2	1.5	0.1	1.8
	Ocp	1.0	1.6	2.2	2.4	5.2	1.6	1.2	6.6	2.8	19.9
1400-1500	Pro	1.9	40.6	33.4	0.9	0.6	15.8	3.2	2.0	0.1	1.7
	Ocp	1.1	1.6	2.4	2.3	5.2	1.6	1.4	8.5	1.3	19.0
1500-1600	Pro	2.1	44.4	31.2	1.0	0.6	15.3	2.1	1.3	0.1	2.0
	Ocp	1.1	1.6	2.3	5.4	5.8	1.6	1.3	15.3	2.0	16.3
1600-1700	Pro	2.8	39.8	33.4	0.9	0.4	16.0	2.1	1.9	0.1	2.6
	Ocp	1.1	1.5	2.2	4.3	4.4	1.7	1.3	13.2	2.0	16.6
1700-1800	Pro	3.3	44.8	33.0	1.0	0.7	10.7	1.1	2.3	0.1	3.0
	Ocp	1.1	1.6	2.2	2.4	10.0	1.6	1.4	10.0	3.0	20.2
1800-1900	Pro	3.3	53.0	29.0	0.5	1.2	6.0	0.7	3.0	0.1	3.2
	Ocp	1.1	1.5	2.3	3.6	12.0	1.6	1.4	28.0	6.8	30.6
1900-2000	Pro	2.5	46.7	38.4	0.4	1.4	4.6	0.6	2.5	0.1	2.9
	Ocp	1.1	1.5	2.3	1.7	13.5	1.5	1.0	17.0	2.3	23.1
2000-2100	Pro	1.9	37.8	49.7	0.4	1.4	3.1	0.9	2.0	0.1	2.8
	Ocp	1.1	1.4	2.1	1.9	8.3	1.4	1.4	17.2	1.4	11.9
2100-2200	Pro	1.5	36.6	52.8	0.2	0.8	3.3	0.7	1.4	0.1	2.6
	Ocp	1.2	1.4	2.1	2.5	7.2	1.6	1.2	11.7	1.3	10.5
2200-2300	Pro	1.7	38.4	51.4	0.1	0.6	3.3	0.7	1.1	0.1	2.4
	Ocp	1.2	1.5	2.1	2.0	9.4	1.6	1.6	8.9	1.0	11.2
16 hours	Pro	2.2	39.8	37.6	0.8	0.8	11.9	2.1	2.1	0.1	2.8
	Ocp	1.1	1.5	2.2	4.0	8.8	1.6	1.3	14.0	5.6	22.3

Legend

- Pro.** Proportion of vehicles in % (Sum may not add up to 100% due to figure rounding)
Ocp. Average occupancy of vehicles
M&H Medium and Heavy